

Schneider Display Solutions

PowerPoint® *Scheduler*

the bright side
of display

Time Control Switch

PowerPoint® -
presentations,
Audio and Video

Display Remote
Control

SCHNEIDER
INFOSYSTEMS

PowerPoint® is a registered Trademark
of the Microsoft Corporation

PowerPoint® Scheduler Schneider Display Solutions

In foyers or in showrooms e.g. there are shown very often to visitors Microsoft PowerPoint® presentations running in continuous operation or on a predetermined schedule. Even PowerPoint or Windows do not provide the possibility of switching on and off selected presentations automatically.

The program *PowerPoint® Scheduler* from Schneider Infosystems allows you to start your PowerPoint® presentations right on time as well as Videos and Internet-TV on display and to steer the display equipment.

In a clearly arranged Calendar you define the switches of your presentations in advance.

With a "Preview" option you make sure that you have selected the right show. The Calendar provides also the entering of repetitive switches.

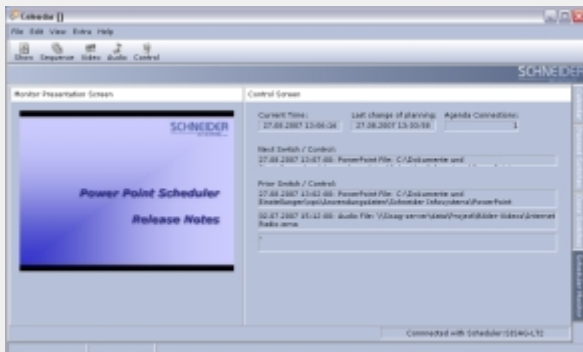
In addition you are able to set sequences of presentations and videos in user-defined chronology and length.

The Scheduler program is not only switching presentations and videos but also accompanying your ad with sound and speech. If a local separation of planning switching and display equipment is needed you are able to install the input Agenda and the Scheduler program on two separate PCs in the local network. Thereby your office can manage the planning and monitoring of the switches comfortable from their desk.

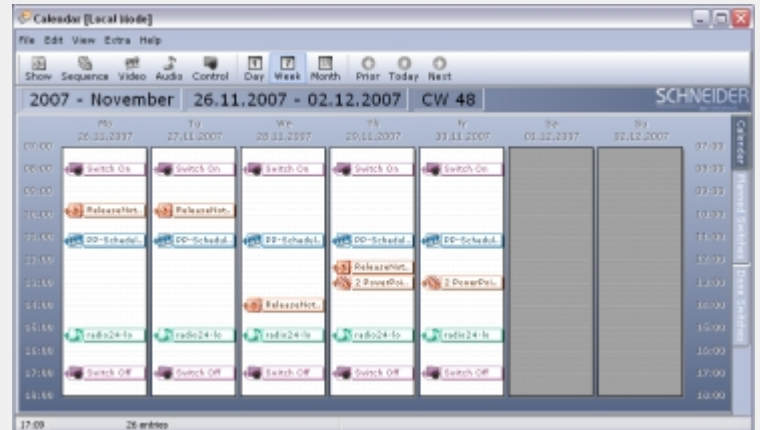
Optionally screen projectors and flat screens can be switched on and off by the Scheduler program.

With *PowerPoint® Scheduler*, the multimedia-based solution of communication, it is so easily to get through to your audience, efficiently and on schedule at all times.

Presente your information and ad centrally controlled right on time on one or multiple large-sized screens.



Monitoring of Scheduler screen and current switches in Agenda



Main window of the Calendar program: Overview with the time switches for PowerPoint® presentations (red) and the display remote controls (blue)

System Description:

- Graphical Calendar for the determining of time control switches of diverse PowerPoint® presentations as well as Audio and Video files
- Automatic switch on and off of predefined presentations with the Scheduler program
- Predefintion of repetitive switches over a definable period
- Creation of sequence - groups out of PowerPoint® presentations and Video shows
- Screen control: Definition and scheduling of RS-232 remote control commands, e.g. for switch on and off the display media, switching display modes, et cetera
- Network operation for separation of Scheduler and Agenda

System Requirements:

- Microsoft PowerPoint® at least version 97
- Windows® XP/2000, DirectX 9
- RS-232 interface for the display remote control option

Do you wish to automate your presentations and displays with *PowerPoint® Scheduler*?

We recommend you to start with a Trial License of *PowerPoint® Scheduler*, which you are able to test at large in your application.

Please contact us with the following address:
info@schneider-infosys.ch

Schneider Infosystems AG
Arbachstrasse 56
CH-6340 Baar

Phone +41 (0) 41 760 55 01
Fax +41 (0) 41 760 55 02
www www.schneider-infosys.ch